

# Woodbury City Police Department

## Traffic Unit

220 S. Broad St.  
Woodbury, NJ 08096

### Speed Enforcement Evaluator

**Location:**  
**Grant Avenue**

**Closest Cross Street:**  
South Childs Street

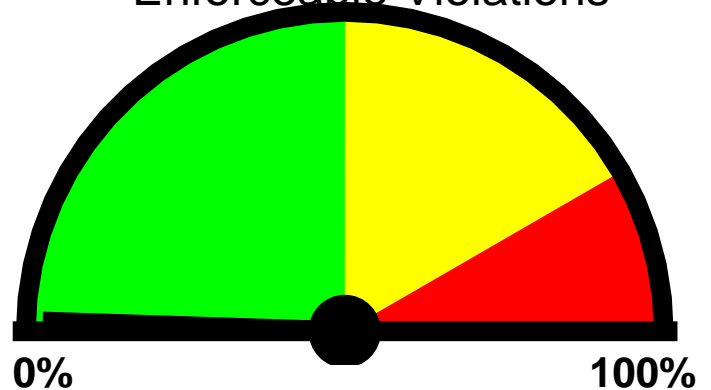
**Analysis Dates:**  
Friday, August 30, 2024  
Friday, September 6, 2024

**Equipment Used:**  
JAMAR Covert Radar

**Installed By:**  
Det. J. Duffy #3100

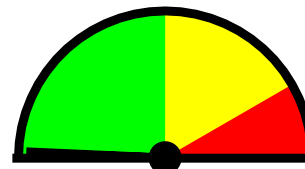
**Requested By:**  
Citizen Complaints

Total Percentage of  
Enforceable Violations



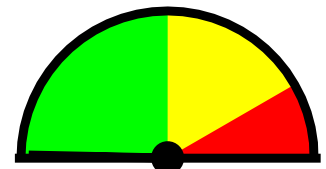
0% 100%  
**Posted Speed Limit:** 25 MPH  
**Enforcement Tolerance:** 6 MPH  
**Enforcement Limit:** 32 MPH & Up  
**Percentage Above Limit:** 1.0%  
**Enforcement Rating:** **LOW**

Lane1



**Percent Above Limit:** 1.4%  
**Enforcement Rating:** **LOW**

Lane2



**Percent Above Limit:** 0.7%  
**Enforcement Rating:** **LOW**

Combined

1-5	6-10	11-15	16-20	21-25	26-30	31-35	36-40	41-45	46-50	51-55	56-60	61-65	>65
0	24	235	323	160	39	7	0	1	1	0	0	0	0

85 percentile = 22

Lane1

1-5	6-10	11-15	16-20	21-25	26-30	31-35	36-40	41-45	46-50	51-55	56-60	61-65	>65
0	14	87	154	75	23	5	0	0	1	0	0	0	0

85 percentile = 22

Lane2

1-5	6-10	11-15	16-20	21-25	26-30	31-35	36-40	41-45	46-50	51-55	56-60	61-65	>65
0	10	148	169	85	16	2	0	1	0	0	0	0	0

85 percentile = 22